

XG-Scale



**rinstrum**

SMART WEIGHING SOLUTIONS

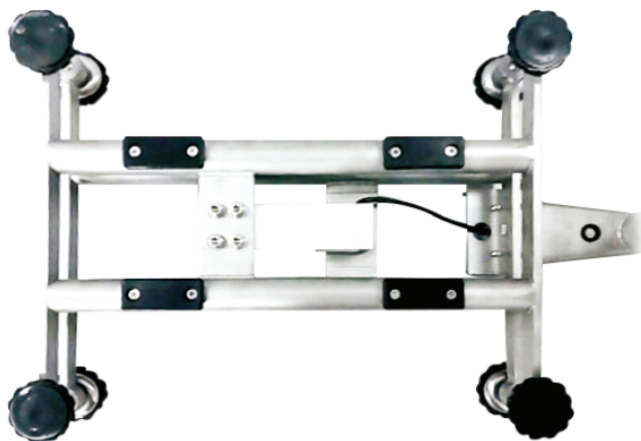


## XG Scale Base Series

- Aluminium load cell
- Stainless steel (304) frame/pan/post
- Various Scale capacities
- Different Pan sizes

## Scale Types

Type	Pan Dimensions	Max capacity
XG3030	300mmx300mm	100kg
XG3040	300mmx400mm	100kg
XG4050	400mmx500mm	200kg
XG5060	500mmx600mm	300kg



## Easy Maintenance & Operation

- Clear open frame – Easy to keep clean
- Removable low sided pan - Deflect splatter
- Sturdy pan construction – No warping
- 2 Axis rotating head – For best operator viewing angle

## Built To Last

- 2mm circular 304 stainless tubal steel
- Over load protection stops
- Rectangular folded pan
- Overload recording increments every time the scale is overloaded



## Proven Rinstrum Indicators

Choose the Rinstrum indicator that best suits your application from the basic R320 with weight only display through to filling on the R423 stainless steel for use in more complex operations.



### R320 Indicator

- ABS Housing with silicon keys
- AC/DC/ 4AA Battery Power Options
- Super low cost option weight display only
- Clock calendar, printing available depending on firmware



### X320 Indicator

- Tough enclosure – Impact resistant composite alloy housing
- IP68 and IP69K rated
- AC/DC/Battery Power Options
- 3 band check weighing

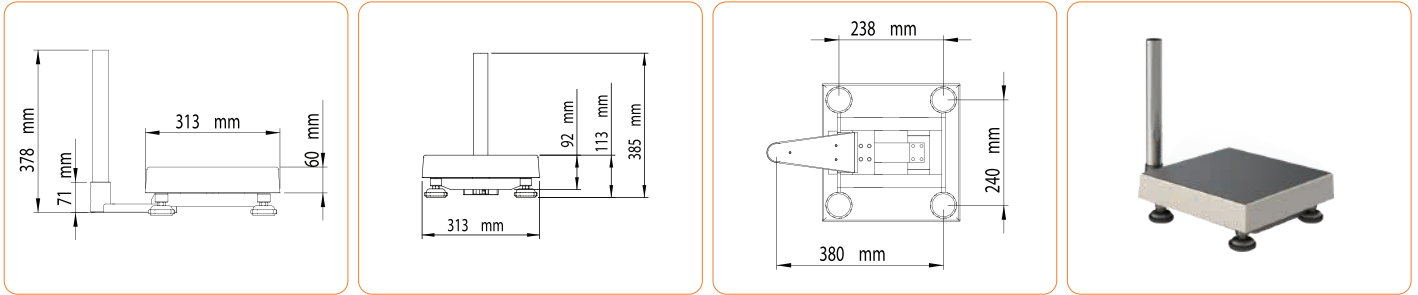


### R400 series indicator

- Stainless Steel or ABS housing
- Range of firmware options from basic printing to batching
- AC/DC/Battery Power Options
- LCD with 4 alpha-numeric displays and LED backlighting

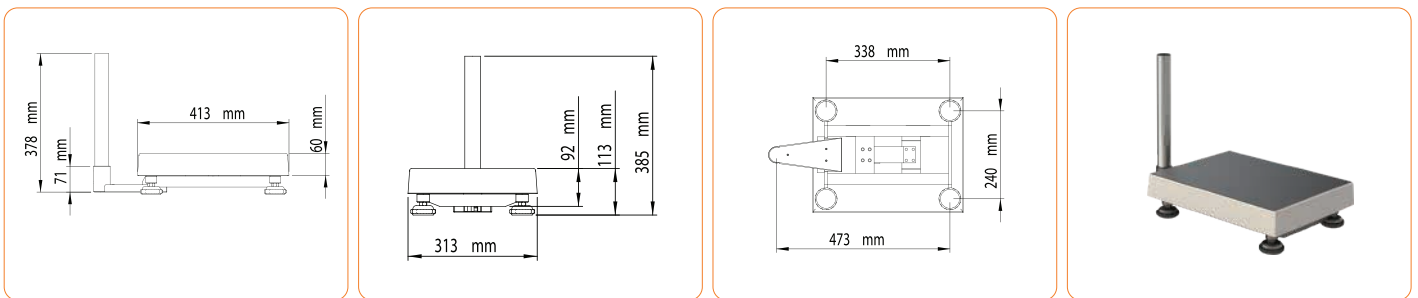
## XG-3030-100 Scale

300 x 300 mm (12 x 12 inch) stainless steel platform, tubular frame and IP67 sealed aluminum load cell (L6E3-C3-150), 36-38 mm (1.4-1.5 inch) stainless steel pole included. With maximum capacity of 100 kg (220 lb).



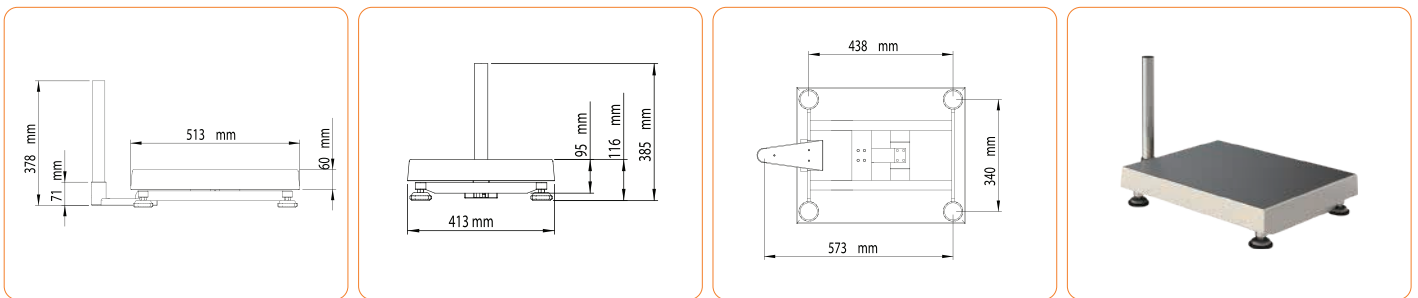
## XG-3040-100 Scale

300 X 400 mm (12 x 16 inch) stainless steel platform, tubular frame and IP67 sealed aluminum load cell (L6E3-C3-150), 36-38 mm (1.4-1.5 inch) stainless steel pole included. With maximum capacity of 100 kg (220 lb).



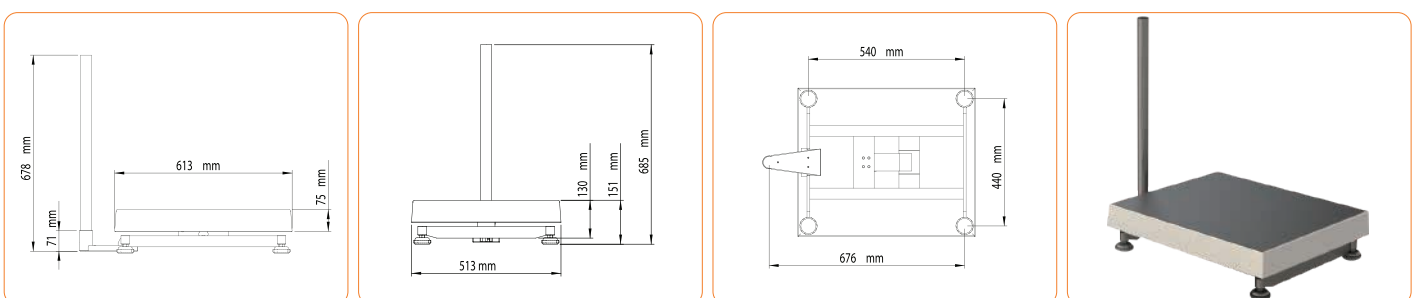
## XG-4050-200 Scale

400 X 500 mm (16 x 20 inch) stainless steel platform, frame and IP67 sealed aluminum load cell (L6E3-C3-250KG), 36-38 mm (1.4-1.5 inch) stainless steel pole included. With maximum capacity of 200 kg (440 lb).



## XG-5060-300 Scale

500 x 600 mm (20 x 24 inch) stainless steel platform, tubular frame and IP67 sealed aluminum load cell (L6G-C3-500KG), 66-68 mm (2.5-2.6inch) stainless steel pole included. With maximum capacity of 300 kg (660 lb).



## Specifications

Load Cell IP Rating	IP65
Pan Size and Max Capacity (kg)	XG3030 - 300x300mm pan - 100kg Max XG3040 - 300x400mm pan - 100kg Max XG4050 - 400x500mm pan - 200kg Max XG5060 - 500x600mm pan - 300kg Max
Materials	
Frame	304 Stainless Steel
Pan	304 Stainless Steel
Feet	304 Stainless Steel
Load cell	Aluminium

## Firmware Specifications

Firmware	R400 Series		R300 Series	X300 Series
Functions	Basic (K401, K402)	Filling/Batching (K410/K411)	<b>K342 :</b> Basic weight only	<b>K376 :</b> Basic weighing + programmable function key + Basic check weighing + printing.
	1/250 Products Custom printing, custom unit switching, counting, manual hold, peak hold, auto output totalising	1/250 Products Custom printing, custom unit switching, counting, manual hold, peak hold, auto output totalising	<b>K344 :</b> Basic weighing + RS232 + Basic printing	<b>K378:</b> Basic weighing + function key fixed to check weighing + advanced check weighing + printing
			<b>K346 :</b> Basic weighing + RS232 + Basic printing + Set points	
			<b>K354 :</b> Basic weighing + RS232 + Custom printing + Clock	
			<b>K356 :</b> Basic weighing + RS232 + Custom printing + Clock + I/O + Set points	



Proudly Sold & Serviced By:

**Able Scale Co Pty Ltd**

Ph: 1300 731 360

21 Green St Thomastown VIC. 3074

find us on the web: [www.ablescale.com.au](http://www.ablescale.com.au)



### AUSTRALIA

Rinstrum Pty Ltd  
41 Success Street  
Acacia Ridge 4110  
Australia

Ph: +61 7 3216 7166  
Fax: +61 7 3216 6211  
Email: [sales@rinstrum.com](mailto:sales@rinstrum.com)

### USA

Rinstrum Inc  
1349 Piedmont Drive  
Troy, Michigan 48083  
United States

Toll Free 1 877 829 9152  
Ph: +1 248 680 0320  
Fax: +1 248 499 1331  
Email: [sales.usa@rinstrum.com](mailto:sales.usa@rinstrum.com)

### EUROPE

Rinstrum Europe GmbH  
Hans-Böckler-Straße 42  
D-40764 Langenfeld  
Germany

Ph: +49 (0)2173 16562-10  
Fax: +49 (0)2173 16562-29  
Email: [sales.eu@rinstrum.com](mailto:sales.eu@rinstrum.com)