



If you need to weigh, wrap or label, then call 'Able'.

Able Scale Co Pty Ltd



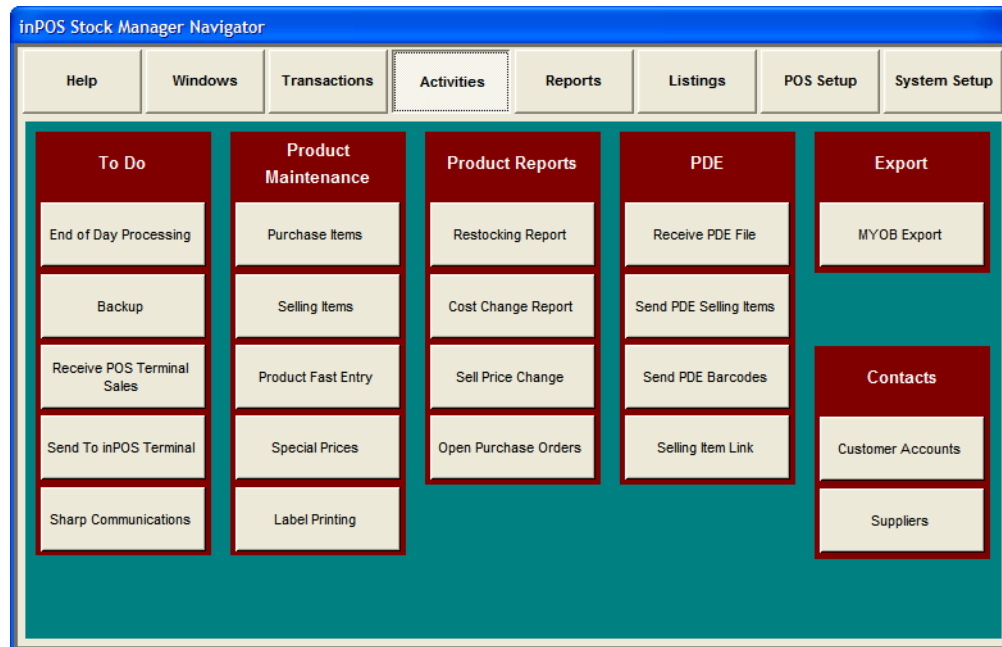
Intelligent Point of Sale Solutions

Quick, easy and flexible.

inPOS Terminal is not a cash register in a computer it is easier than that...

inPOS Terminal is quick and easy to set-up. Its flexibility makes it suitable for General Retail, Cafes, Restaurants, Bars, Fruit Shops, Convenience Stores, Fuel Stations, Kiosks and Hardware Stores. Because of the flexibility in setting up the terminal, the terminal operators serve customers quicker and find their job easier.

All POS Systems have to be maintained, for example new products and prices will have to be entered. Maintenance keeps managements control and the reporting accurate. All through the development of inPOS Terminal we have had "keep it easy" in mind, so the maintenance easy. Many POS systems require a specialist to set it up and maintain it. With the inPOS Terminal System no information is with held, if management chooses they can easily maintain and even set-up an inPOS Terminal system.



Able Scale Co Pty Ltd

21 Green St Thomastown Vic 3074 Ph: 9465-0033 Fax: 9465-5300

Email: info@ablescale.com.au

website: www.ablescale.com.au



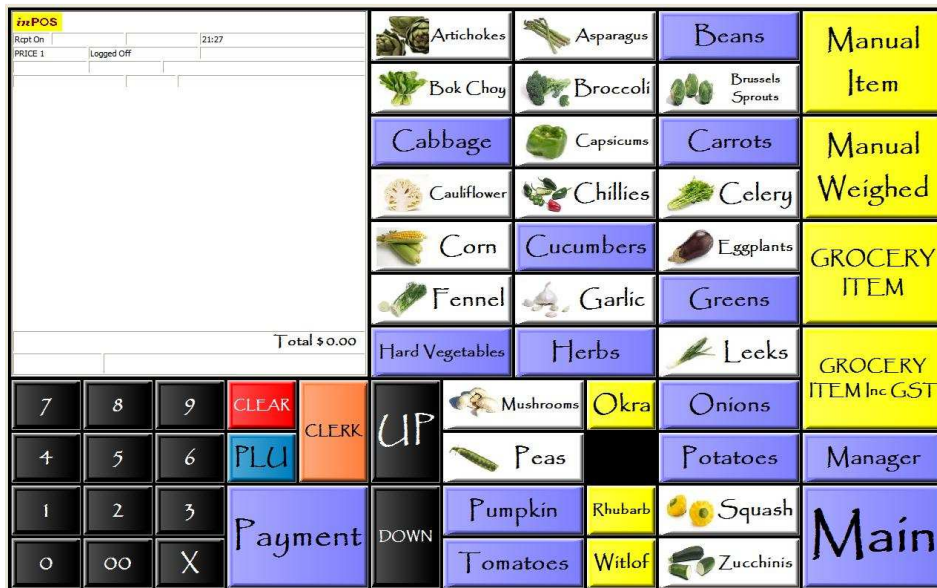
ABLE If you need to weigh, wrap or label, then call 'Able'.

Able Scale Co Pty Ltd

Touch Screen Enabled.

inPOS Terminal has taken the touch screen technology and utilised it to its fullest extent...

inPOS Terminal will operate with a QWERTY Keyboard, POS Keyboard, touch screen or any combination of the three. With a touch screen it is most powerful and simple. A touch screen provides virtually an unlimited number of buttons where setting-up is simply dragging and dropping the buttons into place, compared with a keyboard with a limited number of buttons and each requiring the time consuming task of being labelled. Once set-up the touch screen is much easier to modify. The set-up can be done with a touch screen so a touch screen installation can go in without a keyboard and mouse.



Supports a wide range of devices.

inPOS Terminal; is it the devices that make it easy? ...

inPOS Terminal optional devices.

- Customer Display - is convenient feedback for the customer on prices or the total of their bill and a check that the operator has entered the correct item in the sale.
- Barcode Scanner – quickly and accurately enters an item into the sale by reading the barcode printed onto many products.
- Docket Printers - for printing receipts and sales reports. With 9 drivers most docket printers are supported.
- Kitchen Printers up to 9 kitchen printers can be set-up in a system. For example the kitchen, coffee machine and bar may all have remote printers. Kitchen Printers can be switched off at the terminals; this is for premises that do not want to print orders when they are not busy.
- Remote bump screens, instead of or as well as printing remotely fit as many screens as required for the system to manage the order preparation.
- Cash drawer that can be connected to docket printers, serial ports or terminal I/O ports.
- Scale for automatically entering weighed produce into the transaction.
- Fuel Console. Currently the T24 console is supported to automatically enter fuel sales and report on the litres sold.
- Labelling Scale. If goods are prepacked and a Labeller or Labelling Scale prints a price embedded barcodes the system can be set-up to read these barcodes.

Able Scale Co Pty Ltd

21 Green St Thomastown Vic 3074 Ph: 9465-0033 Fax: 9465-5300

Email: info@ablescale.com.au

website: www.ablescale.com.au



ABLE If you need to weigh, wrap or label, then call 'Able'.

Able Scale Co Pty Ltd

inPOS Demo Store Sales By Item											
Store 1 From 01/02/2009 to 28/02/2009											
	Qty	Total Inc Tax	Cost	Gross Profit	GP%	Spec Qty	Spec Total	Spec Diff	Disc Qty	Disc Total	Disc Diff
1 BEEF											
PORTERHOUSE STEAK	9	\$113.64	\$190.00	-\$66.36	-\$5.39	0	\$0.00	\$0.00	0	\$0.00	\$0.00
BEEF Total	9	\$113.64	\$190.00	-\$66.36	-\$5.39	0	\$0.00	\$0.00	0	\$0.00	\$0.00
Store Total	9	\$113.64	\$190.00	-\$66.36	-\$5.39	0	\$0.00	\$0.00	0	\$0.00	\$0.00

Printed 20/02/2009 09:07:26 Page 1

inPOS Demo Store Sales By Item
Grand Totals From 01/02/2009 to 28/02/2009

Page 1 of 2 09:08

Sales Analysis

How much did we do last summer? ...

inPOS Back Office receives sales data from the terminals in the system (see terminal integration) and shows this data in reports. These reports go well beyond what the terminals themselves produce, the reports enable management, as they are better informed in making decisions. What sells what doesn't, which products make the most profit, what sells in winter, what sells in summer, what to order for next winter, how many to order, all these questions and many more by retrieving the sales data from the terminals.

Sales reports can be grouped by selling locations for example sales for the Bar and the Bottle-shop separately.

Sales can be shown over any period for example last week, last month, yesterday etc.

Gross Profit can be reported for each product and as a total. The cost of each product can be entered or calculated by the system if the supplier invoices are entered.

Stock Control

What is there to lose? ...

Setting inPOS Stock Manager up for stock control will enable management to get reports on:

- inventory shrinkage (inventory losses that are not accounted for).
- the gross profit margin (profit) where the cost is calculated from supplier invoices.
- the cost of sales breakdown. For example how much did wastage cost?

Able Scale Co Pty Ltd

21 Green St Thomastown Vic 3074 Ph: 9465-0033 Fax: 9465-5300

Email: info@ablescale.com.au

website: www.ablescale.com.au



If you need to weigh, wrap or label, then call 'Able'.

Able Scale Co Pty Ltd

inPOS Stock Manager can track products where components of the products are sold. For example Cases of Soft Drink are purchased while bottles are sold or Kegs of beer are purchase while multiple glass sizes are sold. inPOS Stock Manager can also track products sold that are made up of multiple products purchased. For example Christmas packs have a chocolate and drink that are purchased separately. All this flexibility means you are not trying to set-up terminals or your business around a stock control system rather the stock control system is set-up according to the way your business is run.

A stock control system at stock-take will give reports about a business that there is no other way of knowing. There are too many stories of business owners losing thousands over years and putting it all down to dishonest staff when they never had the most basic controls in place. A retail business that is large enough whereby management is not on the sales floor needs to reconcile the inventory incomings and outgoings.

Selling Item - EYE FILLET

Sales Information | Purchase Information

General | POS Terminal Setup | Selling Locations | Stock Locations

Description: EYE FILLET

Department: BEEF

Inc Tax Sell Price: \$32.99

Margin %: 24.25

Margin \$: 8.00

Ex Tax Cost: \$24.99

Ex Tax Last Cost: \$24.99

PLU / Barcode: [Empty]

Recipe Components: No Recipe Items

Buttons: Remove PLU/Barcode, Add PLU/Barcode, Remove Item, Add Item, Edit Qty, Cancel, Save

Selling Item - EYE FILLET

Sales Information | Purchase Information

Linked Purchase Items: EYE FILLET (kilogram) 1

Buttons: Edit Qty, Create Item, Link Item, Remove Item Link

General | Suppliers | Stores | Stock Locations

Product Details

Product: EYE FILLET

Department: BEEF

Package: kilograms

Stocktake: Advanced

This product is purchased in kilograms

At stocktake this product is also counted in grams

and there are 1000 grams

This product also counted in another unit.

Buttons: Cancel, Save

Product Fast Entry Screen

Entry | Stops | Entrys this session = 0

Purchase Description | Save Product

Purchase Information

Item Code: 5

Cost \$: 0

Tax:

Description: [Empty]

Count Unit: [Empty]

Purchase: [Empty]

Counts Units / Purchase: 1

Department: [Empty]

of Selling Items (0-3): 1

Store Selection:

- Store 1 Stock Location 1
- Store 1 Stock Location 2
- Store 1 Stock Location 3

Selling Information

Description: [Empty]

Short: [Empty]

Selling Units / Purchase Unit: 1

PLU / Barcode: [Empty]

Store Selection:

- Store 1 Selling Location 1

Price 1: \$0.00 | Price 2: \$0.00 | Price 3: \$0.00 | Price 4: \$0.00 | Price 5: \$0.00

Able Scale Co Pty Ltd

21 Green St Thomastown Vic 3074 Ph: 9465-0033 Fax: 9465-5300

Email: info@ablescale.com.au

website: www.ablescale.com.au