

# Metal Detector AD-4971 Series



Capable of detecting metal contaminants in products, this system contributes to the delivery of safe products to customers.



- Protected from dust and water to IP65 standards.
- Hygienic design with the entire system washable.
- Suitable for use in HACCP program.
- Automatic sensitivity setting function.
- Easy operation with 7 inch color touch panel.
- Variable belt speed of 10-60m/min.
- Standard Ethernet I/O allowing easy networking via LAN.
- Inspection history function with the ability to record 100 inspection results in the internal memory. Capacity can be increased by using USB memory.
- Cleaning and maintenance is simple with a detachable conveyor belt.

Wheels and stainless steel cabinet options are sold separately.



The display utilises a high visibility touch panel color LCD with user friendly Graphic User Interface (audio guidance support function included).



Product images can be quickly uploaded to the metal detector from USB memory, making product identification and upload fast and simple.



Products can be divided into 10 different groups, with up to 100 products able to be recorded within each group.



Equipped with Modbus RTU/Modbus TCP as standard. With Modbus communication, seamless connection can be easily achieved.



USB memory

Operations such as stopping and starting inspection, collecting data and changing product can all be set from an external device.



LCD screen



Touch panel PC



AD-4971 Metal Detector



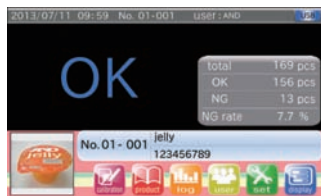
AD-4961 Checkweigher

### Ethernet



### Display example

Normal display



Lissajous display



Bar graph display

### Specifications

#### Model AD-4971 Series

	Width	350mm		
Aperture size	Height	100mm	170mm	250mm
	Pass height	80mm	150mm	230mm
Detection Sensitivity	Fe	φ0.3mm	φ0.5mm	φ0.7mm
	SUS	φ0.8mm	φ1.0mm	φ1.5mm
Dust / water resistance specifications		IP65 compliant		
Touch Panel		○		
2D graph display		○		
Menu with graphic display		○		
Audio guidance for operation		○		
Supports Modbus		○		
FTP server function		○		
History can be recorded in USB memory		○		
Accessibility to I/O box		○		
Maintenance		Gear drive system		
PLC interface(standard feature)	Modbus RTU/Modbus TCP, FTP server function(LAN),			
	Relay output/Universal input			
External input	Non-voltage contact input 4 points			
External output	Relay output 8 points			

Optional SUS 304 control cabinet available

Modbus is a registered trademark of AEG Schneider Automation International

**A&D Weighing**  
*Excellence in Measurement*  
 ACN 26 007 556 809  
 Head Office  
 32 Dew Street  
 THEBARTON South Australia 5031  
 Telephone (08) 8301 8100  
 Facsimile (08) 8352 7409



find us on the web: [www.ablescale.com.au](http://www.ablescale.com.au)

Proudly Sold & Serviced By:  
**Able Scale Co Pty Ltd**  
 Ph: 1300 731 360  
 21 Green St Thomastown VIC. 3074

